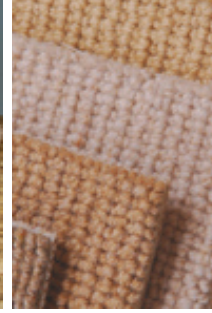




LEGACY
ON MARA LAKE

Finishing materials were carefully and thoughtfully selected to reflect a 'nature-inspired', contemporary style, drawing upon the incredible waterfront location as inspiration. Meanwhile, a finished product equal to what one would expect for international standards in a contemporary five-star hotel, the products were selected to stand the test of time in both fashion and function, and eliminate maintenance hassles and perform for years before replacement would be necessary.



Windows: European-Quality and Design

German engineered MS Beyond Windows Canada, high quality machined parts, and smooth operating system. Heat-insulating gaskets, steel reinforcements, thermo two-pane set with R-factor of 5.2, designed and manufactured in Germany Hoppe Secustic handle, burglar proof hardware with titanium-steel catch, Roll-Royce guiding system. Structure of window and casement frame ensures efficient thermal and sound insulation and high rigidity. Outer pane of glass coated with silver layer that reduces heat loss and lowers sound transfer by 32 Db.

Cork Flooring in kitchens and livingrooms

This versatile product was selected because it is environmentally friendly. The product is a renewable resource, as cork represents the bark peeled from trees, versus cutting down and milling the trees into lumber. Cork flooring is resilient and quiet, featuring 5% volume is air which functions natural shock and sound absorber. It has insulating qualities that other hard finishes do not, is anti-allergenic, and anti-static. When sealed, it will usually outlast most hardwoods or vinyl.

Wool carpeting in bedrooms

Colin Campbell, Nature's Carpet brand "African Safari" wool sisal: 100% New Zealand Wool with Jute backing. This comfortable, stylish and luxurious flooring features low toxicity which improves indoor air quality, and is eco friendly and made from a sustainable resource. Anti-allergenic, zero emissions, with a breathable fiber which does not promote dust mites, it is ideal for the end user concerned with indoor air quality. With natural stain resistance, and a durable fiber which springs back quickly, it is long-wearing and high insulating for sound and temperature. The natural Crimp shape of the wool fiber traps air to maintain either cool or warm conditions. It's hard to ignite, and easy to extinguish.

Designer Tile flooring in bathrooms and utility spaces

12" X 24" porcelain T-Sol Paris series, brown or beige.
Stylish and hard-wearing for anti-slip and easy cleanup.

Closet organizers

Stay tidy and reduce workload when everything has a place in closets. Making the most of your storage space lets you trade square footage from closets into living area.

Custom Cabinets

Contemporary, sleek, and well built and styled in a manner that speaks of classic quality and fashion. Natural or dark stained oak, with a grain style that is straight and tightly-patterned called "Riffed Oak". European hinges and drawer hardware feature a soft-close and self-close mechanism, dovetail joined drawer boxes.

Cabinet Hardware

Richelieu Stainless Steel Contemporary 219 mm, BP3487219170.

Kitchen Countertop Surface

32mm (1 1/4") granite with 13mm (1/2") bullnose edge.



Bathroom Vanity Countertop Surface

32mm (1 1/4") quartz with 13mm (1/2") bullnose edge is composed of 93% crushed quartz – one of nature's hardest materials, with polymer resins and pigments compacted under intense vibration, vacuum and pressure into non-porous polished slabs.

Plush Living Spaces

Over height smooth finish ceilings.
Oversized solid core wood veneer doors.

Roller Blinds

On all windows for nighttime privacy and daytime temperature control.

Appliances: Elite Units

- Washer: Inglis Brand front-loading, stainless drum, Energy Star qualified.
- Dryer: Inglis Brand 3.8 cu ft, 11 cycles, with stainless drum.
- Fridge: KitchenAid Brand 36 cu ft. bottom-mount stainless with icemaker, filtered water, quiet compressor, and Energy Star qualified.
- Stove: KitchenAid Brand ceramic cook top.
- Hood fan: Broan Brand 30" stainless, 160 cfm.
- Wall Oven: KitchenAid Brand stainless convection, steam cook with roll out racks, built-in microwave.
- Beverage Cooler: Danby Brand 112 can capacity with tinted glass door to protect product from UV rays, door lock, and interior LED light which does not create heat.
- Dishwasher: KitchenAid stainless dishwasher with, 4 cycle, sound insulation below 54 dBA, stainless arms, bladed food disposer, tall tub with commercial grade stainless interior.

Appliances: Non-Elite Units

- Washer: Inglis Brand, front-loading, 2.9 cu ft energy star qualified with 3 temperatures.
- Dryer: Inglis, Brand 3.8 cu ft 11 cycles, stainless drum.
- Fridge: KitchenAid brand bottom-mount Architect Series with large contoured commercial-style handles, spill proof shelves, humidity controls.
- Stove: KitchenAid Brand 30' self-cleaning smooth top range with warming drawer, professional styling, front controls mean you never reach across steaming pots.
- Dishwasher: KitchenAid Brand stainless, quiet, visible console dishwasher runs less than 54 dBA, Energy Star qualified, washes up to 14 place settings, 4 cycles.
- Hood fan: KitchenAid brand microwave hood fan combination.

Plumbing fixtures

Grohe, Duravit, and Ultrabath brand.